

The left side of the slide features a decorative vertical bar composed of several elements: a thin solid line, a wider textured band with a fine grid pattern, and another thin solid line. To the right of these bars are five solid olive-green circles of varying sizes, arranged in a roughly vertical line that tapers towards the bottom. The text 'IVTA OVERVIEW' is positioned to the right of the circles, with the largest circle partially overlapping the letter 'I'.

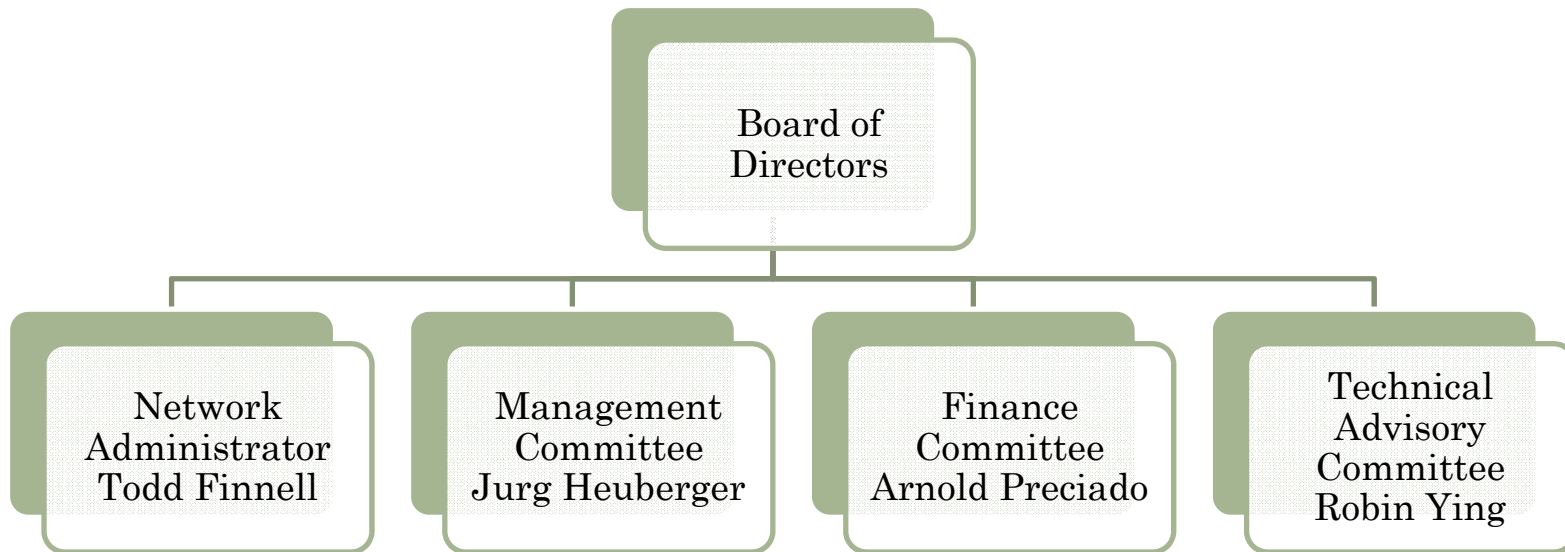
IVTA OVERVIEW

MISSION

- To support the telecommunications needs of Imperial Valley public agencies in order to contribute to the growth and development of our community.



ORGANIZATION CHART



SEGMENTS

- K-12 School Districts
- Imperial Valley College
- San Diego State University -Imperial Valley Campus
- City Agencies
- County of Imperial



IVTA MEMBERSHIP (28 AGENCIES)

- Brawley Elementary School District
- Brawley Union High School District
- Calexico Unified School District
- Calipatria Unified School District
- Central Union High School District
- City of Brawley
- City of Calexico
- City of El Centro
- City of Holtville
- City of Imperial
- County of Imperial
- County Retirement
- El Centro School District
- Heber School District
- Holtville Unified School District
- Imperial County Office of Education
- Imperial Unified School District
- Imperial Valley Community College
- Imperial Valley Regional Occupational Program
- Local Agency Formation Commission
- Magnolia Union School District
- McCabe Union School District
- Meadows Union School District
- Mulberry School District
- San Diego State University
- San Pasqual Unified School District
- Seeley Union School District
- Westmorland Union School District



PARTNERSHIPS

- Imperial Irrigation District (IID)
 - IID Fiber Optic Network access
 - Communications tower access
 - Pole Access
- Time Warner
 - Corporate rates for engineering and fiber optic installation
 - Infrastructure co-location



RESOURCES

- Access to IID fiber optic network
- Access to 70 Miles of fiber between Seeley and Winterhaven
- Access to IID poles
- Annual Budget \$490K
- Over 60 Miles of fiber optic cable installed
 - 48, 24, 12, 6 count



IVTA RESPONSIBILITIES

- Engineering, Design, and Construction of new projects
- Equipment procurement and refresh
- Maintain network stability
- Network Monitoring
- Troubleshoot/repair connectivity issues
- Develop Policies
- Technology Plan



PROJECTS STATUS

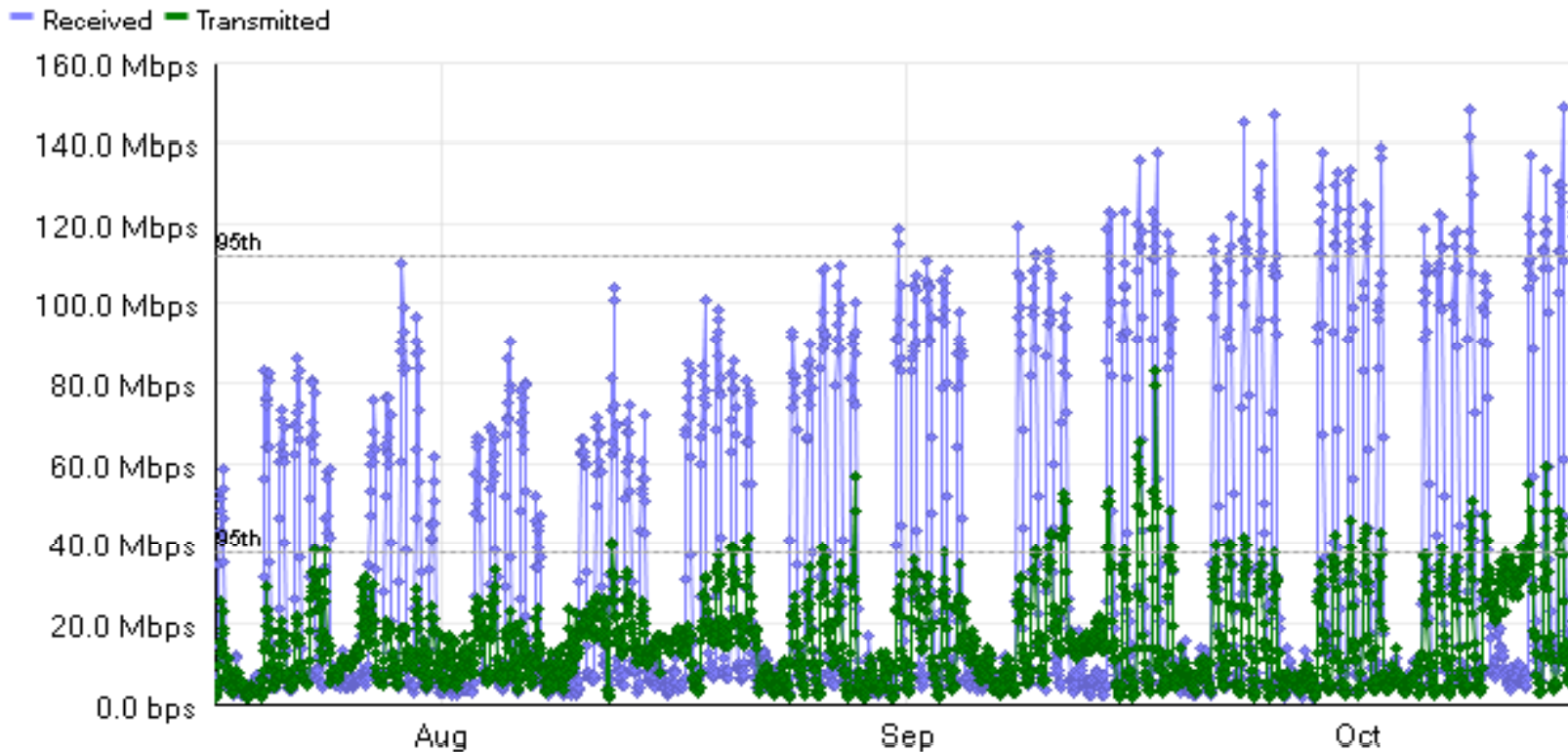
- Total Sites: 107
- Connected : 87
- Work in Progress: 2
- Approved for construction: 12
- Waiting List: 6



NETWORK USAGE

IVTA- ICOE CAP-GigabitEthernet1/23 - Connection to CENIC

In/Out Average bps of Recv 1.0 Gbps Xmit 1.0 Gbps
LAST 3 MONTHS



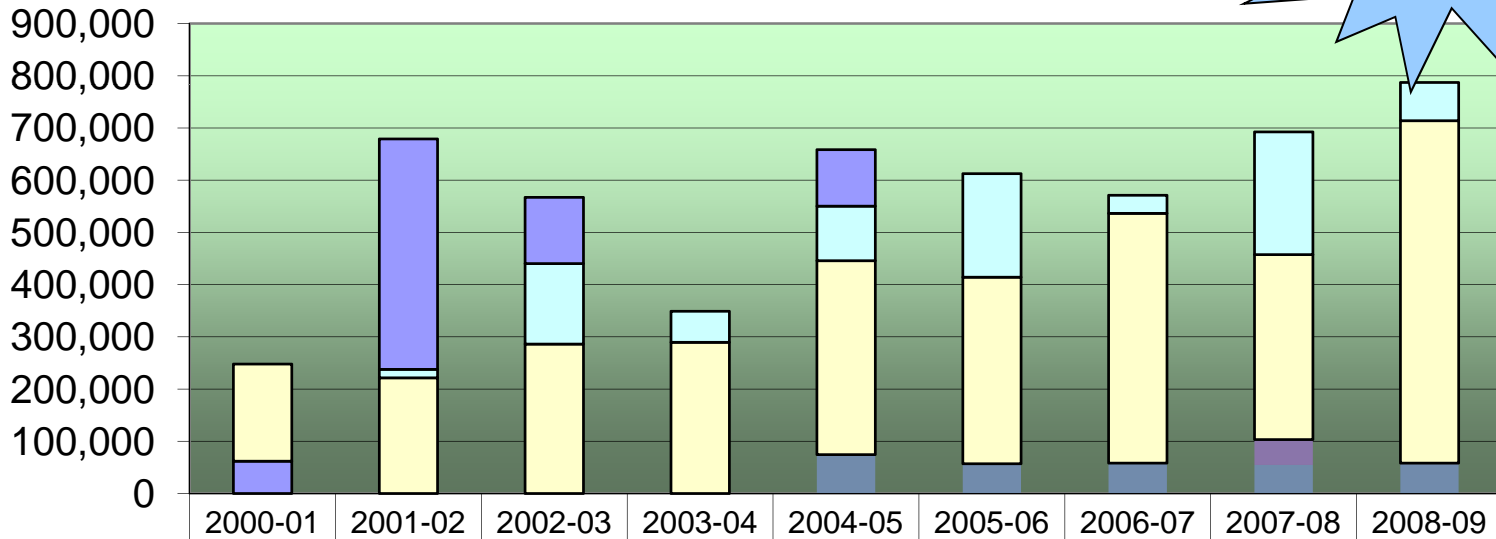
2009

95th Percentile: Received is 111.7264 M bps, Transmitted is 37.7995 M bps

SolarWinds Orion Network Performance Monitor 9.1 SP4

CAPITAL EXPENSES

**5.1 Million
As of June 2009**



	2000-01	2001-02	2002-03	2003-04	2004-05	2005-06	2006-07	2007-08	2008-09
ICOE	\$186,00								
Borderlink	\$62,000	\$441,00	\$127,00		\$108,00				
Agencies		\$16,238	\$153,98	\$59,435	\$104,66	\$198,29	\$34,747	\$235,20	\$73,492
IVTA		\$221,78	\$286,42	\$289,64	\$371,39	\$357,27	\$478,28	\$354,15	\$655,66
Mit fees								\$48,778	\$2,209
PEG					\$74,450	\$56,994	\$58,378	\$54,604	\$56,073



BENEFITS

- Access to dark fiber (scalability)
- Improved delivery of services
- Support for bandwidth intensive applications (voice, video)
- High speed access to Internet at no additional cost*
- Unparalleled bandwidth and value

